



## **Michigan State Univeristy**

Chair of the Department  
of Supply Chain Management

**MICHIGAN STATE**  

---

**UNIVERSITY**

Broad College of Business



## Opportunity Summary

*The Department of Supply Chain Management in the Eli Broad College of Business at Michigan State University seeks to hire a new department chairperson to start in August 2019.*

*The Supply Chain Management Department (SCM) is the home of internationally recognized faculty who are among the most accomplished scholars and teachers. Working with the Broad College leadership, this is an outstanding opportunity for a demonstrated leader to guide a department of dedicated, high performing faculty*

*and staff as part of the # 1 ranked supply chain management program. The next Department Chair will inherit a well-resourced department, world-class facilities, and continue to further enhance the reputation of the program with the recruitment of leading faculty. Information on the Michigan State University community, the Eli Broad College of Business, the Department of Supply Chain Management, desired characteristics for the next Chair, and the process to be considered is enclosed in the remainder of the document.*



## About

**Michigan State University**  
<https://msu.edu/>

Founded in 1855, Michigan State University (MSU) has always been an innovator in research, teaching, and application of knowledge. In 1863, Michigan State was designated the beneficiary of the Morrill Land-Grant Colleges Act endowment, becoming the pioneer land-grant college in the United States and serving as a prototype for future institutions. From these origins, Michigan State has evolved into a comprehensive, global, world-class university with a full spectrum of programs and attracting a diverse set of gifted professors, staff members, and students. The University has been an elected member of the Association of American Universities since 1964.

Located in East Lansing, (<https://www.cityofeastlansing.com/>), a community three miles east of Michigan's capital in Lansing, MSU is located on a 5,200 acre campus with 2,100 acres in existing or

planned development and 538 buildings, including 95 academic buildings. Michigan State enrolls approximately 51,000 students and employs more than 11,600 faculty and staff members from all of Michigan's 83 counties, all of America's 50 states, and 130 countries. Made up of equal parts women and men, the student body includes 16.6% students of color and 14.5% international students.

The University offers more than 200 programs of study at the bachelor, masters and doctoral levels. MSU is guided by "Bolder by Design" ([www.bolderbydesign.msu.edu](http://www.bolderbydesign.msu.edu)) as a "shared strategic framework that aligns our efforts across Michigan State University and around the globe, harnessing the power of working together to achieve our highest aspirations and to fuel the creation of better outcomes and growing value for our students, state, nation, and world."



## About the Broad College of Business

<https://broad.msu.edu>

The Eli Broad College of Business has 125 full-time faculty in five departments: Accounting and Information Systems, Finance, Management, Marketing, and Supply Chain Management and one industry-specific unit, The School of Hospitality Business. The work of the College is supported by a 100-person administrative staff and 50 academic specialists. Currently, some 7,700 students are enrolled in the Broad College (approximately 6,700 undergraduates and 980 graduate and doctoral students), making Broad one of the largest business colleges in the country. Download the recent annual report here: <https://broad.msu.edu/2017-report/>

The Broad College, one of the top business schools in the world, is consistently a top 25 business college in rankings. The Broad vision is to be the leader in creating knowledge and developing transformational thinkers and doers who make business happen. A core focus of the college's strategic plan is on the 3Rs:

enhance the recognition of our brand, grow the reputation of our people, and increase the rankings of our programs. – Achieving these 3Rs for the Broad College is accomplished through our world-renowned faculty, our students, and our alumni. The College is active in leading and participating in interdisciplinary collaborations across other colleges, departments, and units on campus.

In addition to its current outstanding facilities, in September 2017, the Broad College of Business broke ground on The Pavilion (<https://giving.broad.msu.edu/business-college-pavilion/>) a state-of-the-art facility covering 100,000 square feet. With its focus on flexible classrooms, energy-efficient spaces, and cutting-edge technology, The Pavilion will cement MSU's position as a top-of-mind business school, and will enhance the Broad student experience through its design around community, collaboration, and teamwork.







## The Position

### Chair of the Department of Supply Chain Management

The Eli Broad College of Business at Michigan State University invites nominations and applications to identify its next Chair of the Department of Supply Chain Management (SCM). The Department seeks an exceptional leader who is a dynamic and energetic individual with the ability to effectively engage faculty, staff, students, and external constituencies in a collegial and collaborative manner. The Chair will have a demonstrated record of excellence in collegial academic leadership, faculty development, college and university fundraising and financial management. A research record to support appointment at the full professor level is necessary. Further, a demonstrated ability for program leadership, faculty development, college and university fundraising, and financial management will be an important asset.

Ranked #1 in US News and World Report, the Supply Chain Management Department is the home of internationally recognized faculty who are among the most accomplished scholars and teachers. The department offers a Bachelor's degree in Supply Chain Management, an MS in Supply Chain Management, and PhD's in both Logistics Management, and Operations & Sourcing Management. The department contributes heavily to the Executive and Full-time MBA programs, online certificate programs, and is very active in executive education programs.

A department chairperson at Michigan State University represents the department within the College and the University, and with external constituencies. The chairperson is part of the college's leadership team and is also responsible for the department's faculty and staff recruiting,

development and retention, resource attainment, financial management, and stakeholder relationship management. The chairperson manages a diverse faculty, staff and student body, and should lead a department strong in scholarship, teaching capacity, and outreach. Each of these areas is discussed in more detail below.

MSU's SCM department is known for its integrated end-to-end perspective on supply chain management, and we are looking for candidates who will perpetuate this view. In addition, we are looking for candidates who can contribute to the diversity and excellence of our faculty (deep expertise in logistics, operations, and sourcing). Tenure-track faculty include: Y. Bolumole, A. Choo, D. Closs, S. Griffis, M. Li, S. Melnyk, J. Miller, A. Nair, S. Narayanan, S. Peinkofer, C. Rosales, T. Schoenherr, M. Schwieterman, S. Talluri, S. Vickery, and J. Whipple.

# Major Responsibilities

## Education

The Chair supports and oversees the delivery of comprehensive and state-of-the-art educational programs and ensures compliance with accrediting organizations, and promotes the delivery of an outstanding curriculum and learning environment designed to produce graduates of the highest caliber.

## Talent Development

The Chair assures that key leadership roles within the Department are filled by a diverse group of nationally-recognized faculty and staff who are mentored and supported to deliver excellent educational programs and cutting-edge research. The Chair should recognize the nuances of integrated supply chain management education, actively recruiting and working to motivate and retain top-quality faculty and program leaders so that the Department has the talent to carry out strategic plans.

## Research Advancement

The Chair enhances the graduate programs of the Department and makes necessary changes to ensure excellence of graduate as well as doctoral education and research. The Chair fosters interdisciplinary research activities through encouraging grant seeking opportunities in addition to helping promote reputational visibility in the faculties' primary research area of focus.

## Fiscal Oversight and Compliance

The Chair leads the financing and budgeting processes for the Department, taking divergent views on financial decisions into consideration while effectively managing and leveraging allocated resources. The Chair ensures that applicable policy, procedures, regulations and laws are followed.

## Philanthropy and Resource Development

Working with University leaders and building upon a future for the Department, that is as illustrious as its past, will require continued fundraising activities. The next Chair should be comfortable with facilitating advancement programs and interacting with potential donors in partnership with fellow institutional leaders by continuing to do the following:

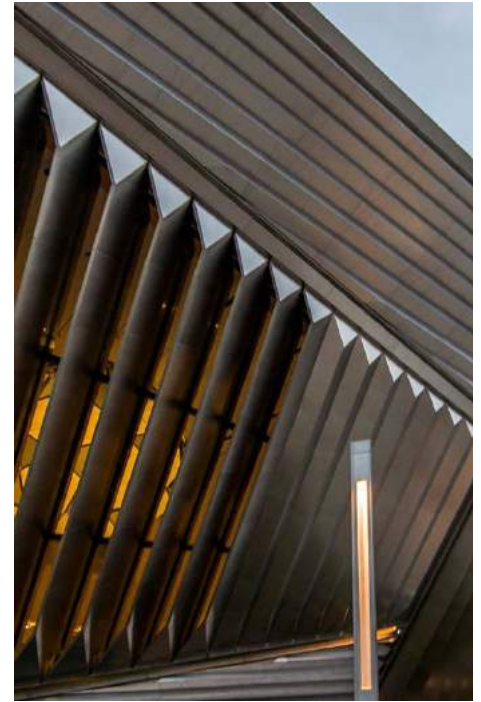
- Being publicly visible and understand how to cultivate excellent relationships with potential donors;
- Securing resources for programs and projects through successful grantsmanship;
- Reaching out to community, state and business leaders to build financial support for fundraising that will contribute to the process of developing a substantial endowment vital to the long-term success of the Department;
- Reaching out to alumni and other leaders, and successfully encouraging them to become actively involved with fundraising and giving.





## Other Personal Characteristics Deemed Important

- Commitment to excellence on both a personal and professional level, with the highest level of personal integrity and ethical standards, and be known for compassion, fairness and objectivity;
- Proactive, innovative, creative and visionary, with an ability to “think outside the box” and constructively embrace and lead change initiatives;
- Collegial, inclusive, and personally committed to ensuring diversity, both in perspectives and in personnel, with the ability to bring out the best in others and develop a spirit of collaboration within and among stakeholders;
- Executive presence and an engaging personal presentation style that encourages consensus-building and cooperation.



## Desired Qualifications

- Applicants should possess a Ph.D. in Business Administration with emphasis in the areas of Supply Chain Management, (e.g., Logistics, Operations, Sourcing) or related disciplines that intersect with SCM, and should have an academic/professional record consistent with an appointment to full professor with tenure;
- A strategic national academic and research leader, grounded in personal integrity with the ability to energize, inspire, and encourage interdisciplinary faculty collaboration;
- Demonstrated ability to manage a complex academic organization and work effectively with colleagues across campus divisions;
- Demonstrated success as an administrator and fiscal manager;
- Demonstrated leadership ability to motivate key constituencies, lead the development of mutually beneficial relationships with partners, and recruit, retain and develop superb, diverse, outstanding faculty and staff;
- Ability to foster and promote gender equity and ethnic diversity among faculty and staff to enrich the university, further its research mission, and preserve the uniqueness of MSU;
- Evidence of effective community involvement, outreach, leadership, and demonstrated ability to forge partnerships and build productive relationships with both campus and business community constituencies;
- Evidence of mentorship, teambuilding, supervision, and staff support for professional development;
- Demonstrated commitment to student centeredness and optimization of student learning reflected by active and visible engagement in student activities, initiatives, and programs.



## Procedure For Candidacy

Applications should include a letter of application and curriculum vitae. Applications and nominations will be accepted until the position is filled. Confidential review of materials and screening of candidates will begin immediately. Harris Search Associates is assisting MSU for this search. Please send your application to the address below or contact Jeffrey Harris, Managing Partner, for further details.

### Contact Info:

Jeffrey Harris, Managing Partner

Tel: 614-798-8500 ext. 125

Cell: 614-354-2100

Email: [jeff@harrisandassociates.com](mailto:jeff@harrisandassociates.com)

[www.harrisandassociates.com](http://www.harrisandassociates.com)

*Michigan State University is an affirmative-action, equal-opportunity employer. MSU is committed to achieving excellence through a diverse workforce and inclusive culture that encourages all people to reach their full potential. The University actively encourages applications and/or nominations of women, persons of color, veterans, and persons with disabilities. MSU is committed to providing a work environment that supports employees' work and personal life and offers employment assistance to the spouse or partner of candidates for faculty and academic staff positions.*

**Harris Search Associates**  
I N N O V A T I O N + T A L E N T

**iic Partners**  
Executive Search Worldwide

Harris Search Associates, an IIC Partners member firm, is a leading global executive search and board advisory consulting firm. Our practice is focused on identifying and attracting leaders to support the growth of clients in the areas of research, science, engineering, academic medicine and commercial enterprises. Clients include the foremost universities, research parks, institutes, academic medical centers and commercial organizations driving global innovation and discovery.

Argentina  
Australia  
Austria  
Belgium  
Brazil  
Canada  
Chile  
China  
Colombia  
Czech Republic  
Denmark  
Finland

France  
Germany  
India  
Ireland  
Italy  
Luxembourg  
Mexico  
Norway  
Poland  
Romania  
Russia  
South Africa

Spain  
Sweden  
Switzerland  
Thailand  
The Netherlands  
Turkey  
United Arab Emirates  
United Kingdom  
United States  
Venezuela